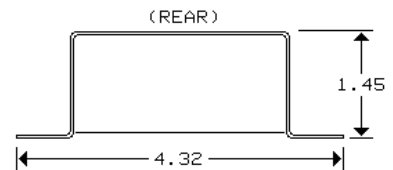
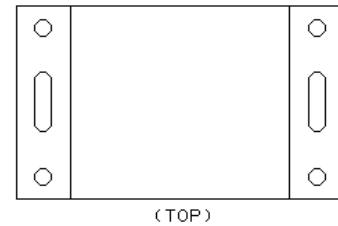
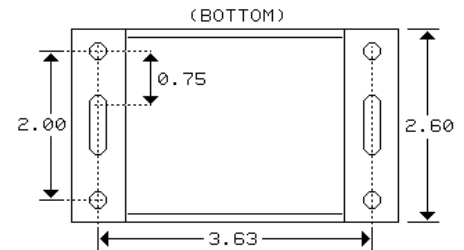
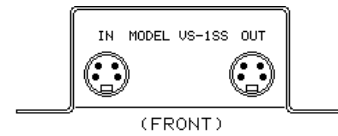


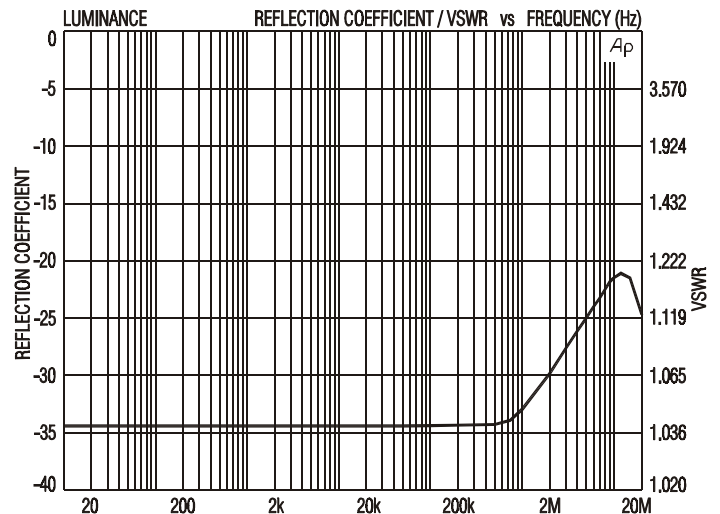
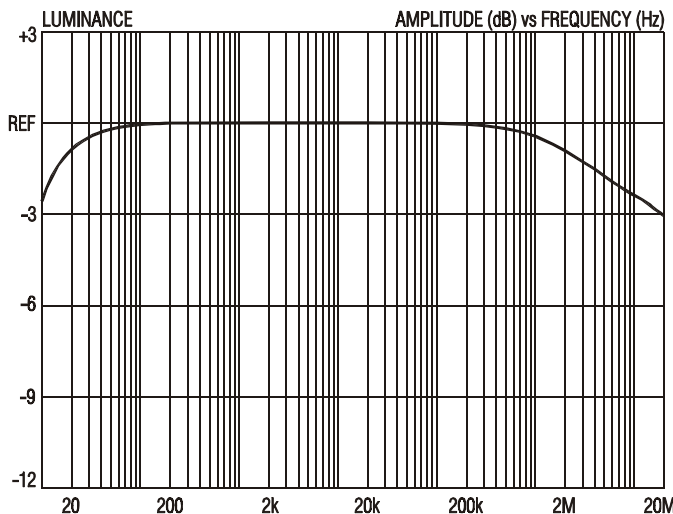
S-VIDEO ISOLATION TRANSFORMER for "SEPARATE VIDEO" or "Y/C VIDEO" SIGNALS

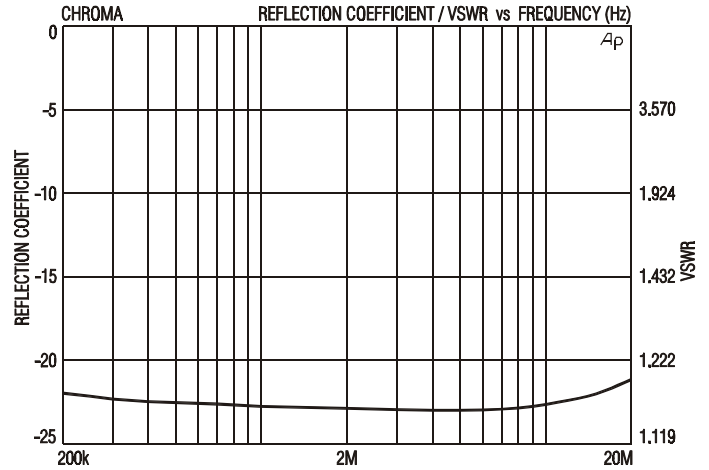
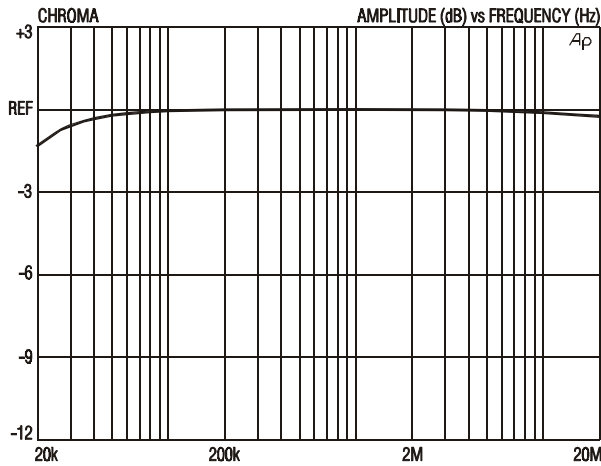
- **Very high ground isolation: 120 dB CMRR typ at 60 Hz**
- **Wide bandwidth: -3 dB at 10 Hz and 20 MHz**
- **High input to output withstand voltage: 350 V RMS min at 60 Hz**
- **Precision impedance: typical VSWR under 1.22 up to 20 MHz**
- **Low insertion loss: 0.72 dB typical**

Using separate transformers for Y (luminance) and C (chrominance), this isolator eliminates video "hum bars", as well as the often associated audio hum or buzz in multimedia entertainment systems, by breaking the so-called "ground loop". Mounting holes allow easy horizontal or vertical mounting to standard rack rails.



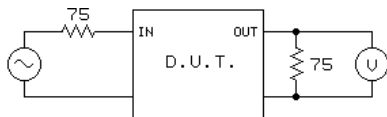
ALL DIMENSIONS IN INCHES



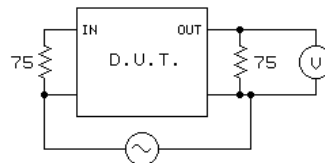


ISO-MAX® VS-1SS SPECIFICATIONS (source Z = load Z = 75 Ω, signal level = 1 V pk-pk unless noted)

PARAMETER	CONDITIONS	MINIMUM	TYPICAL	MAXIMUM
Insertion loss Luminance	10 kHz, test circuit 1	-0.8 dB	-0.72 dB	-0.6 dB
Insertion loss Chroma	3.58 MHz, test circuit 1	-0.8 dB	-0.72 dB	-0.6 dB
Luminance/Chroma Matching			0.1 dB	0.2 dB
Luminance Bandwidth	LF -3 dB re 10 kHz, test circuit 1		10 Hz	12 Hz
	HF -3 dB re 10 kHz, test circuit 1	15 MHz	20 MHz	
Luminance non-linearity	FCC/NTC-7 composite, Tektronix VM700A test set, pk-pk		< 0.1 %	0.2 %
Luminance Input VSWR	1 kHz to 8 MHz, HP 3577A Analyzer & 35676A R/T test kit		1.20	1.25
Chroma Bandwidth	LF -3 dB re 1 MHz, test circuit 1		10 kHz	30 kHz
	HF -3 dB re 1 MHz, test circuit 1	100 MHz	200 MHz	
Chroma Input VSWR	1 MHz to 6 MHz, HP 3577A Analyzer & 35676A R/T test kit		1.15	1.20
Common Mode Rejection Ratio	Luminance 60Hz, test circuit 2		120 dB	
	Chroma 60Hz, test circuit 2		120 dB	
Allowable DC bias at inputs	Luminance	-1 V	±0	+16 V
	Chroma	-30 V	±0	+30 V
Temperature range	operation or storage	0° C		70° C
Input to Output Voltage Difference (see IMPORTANT NOTE below)	input to output grounds or luminance to chroma grounds (luminance input ground connected to chassis)			24 V RMS 34 V peak



TEST CIRCUIT 1



TEST CIRCUIT 2

All minimum and maximum specifications are guaranteed. Unless noted otherwise, all specifications apply at 25°C. Specifications subject to change without notice. All information herein is believed to be accurate and reliable, however no responsibility is assumed for its use nor for any infringements of patents which may result from its use. No license is granted by implication or otherwise under any patent or patent rights of Jensen Transformers, Inc.

IMPORTANT NOTE: THIS PRODUCT IS NOT INTENDED FOR USE IN CIRCUMSTANCES WHERE THE DC OR PEAK AC VOLTAGE BETWEEN INPUT AND OUTPUT CONNECTIONS EXCEEDS 34 VOLTS OR WHERE ITS FAILURE COULD CAUSE INJURY OR DEATH.

**JENSEN TRANSFORMERS, INC., 7135 Hayvenhurst Avenue, Van Nuys, CA 91406-3807, USA
(818) 374-5857 • FAX (818) 374-5856 • www.jensen-transformers.com**